

TAB Products

Preliminary Seismic Design Recommendation Information Form

Please fill out the following field's and submit to Terry Schrab/Nick Beistle. Information below is required for IDS Group to provide accurate anchorage and component strengthening recommendations.

Project Information

TAB Project Name:

TAB Drawing Number(s): NB3033

Date: 4/13/17

TAB Sales Representative: Ken Liebowitz

TAB Sales Representative Contact Number: 714-529-7600 Ext. 1507 714-852-9528

Shelving Installation Site Information:

7822 Walker Street

La Palma, CA 90623

Shelving Installation Story Number: 1st

Total Number of Stories in Building: 1 Basement: Yes / No

Floor Construction- 6" Concrete Slab

(Example: 3/4" Thick Lightweight Concrete over W3 Metal Deck (Total thickness = 6 1/4"), or 5" thick Slab on Grade)

Shelving Information

Shelving Type: 76.25" LT Additional Shelving

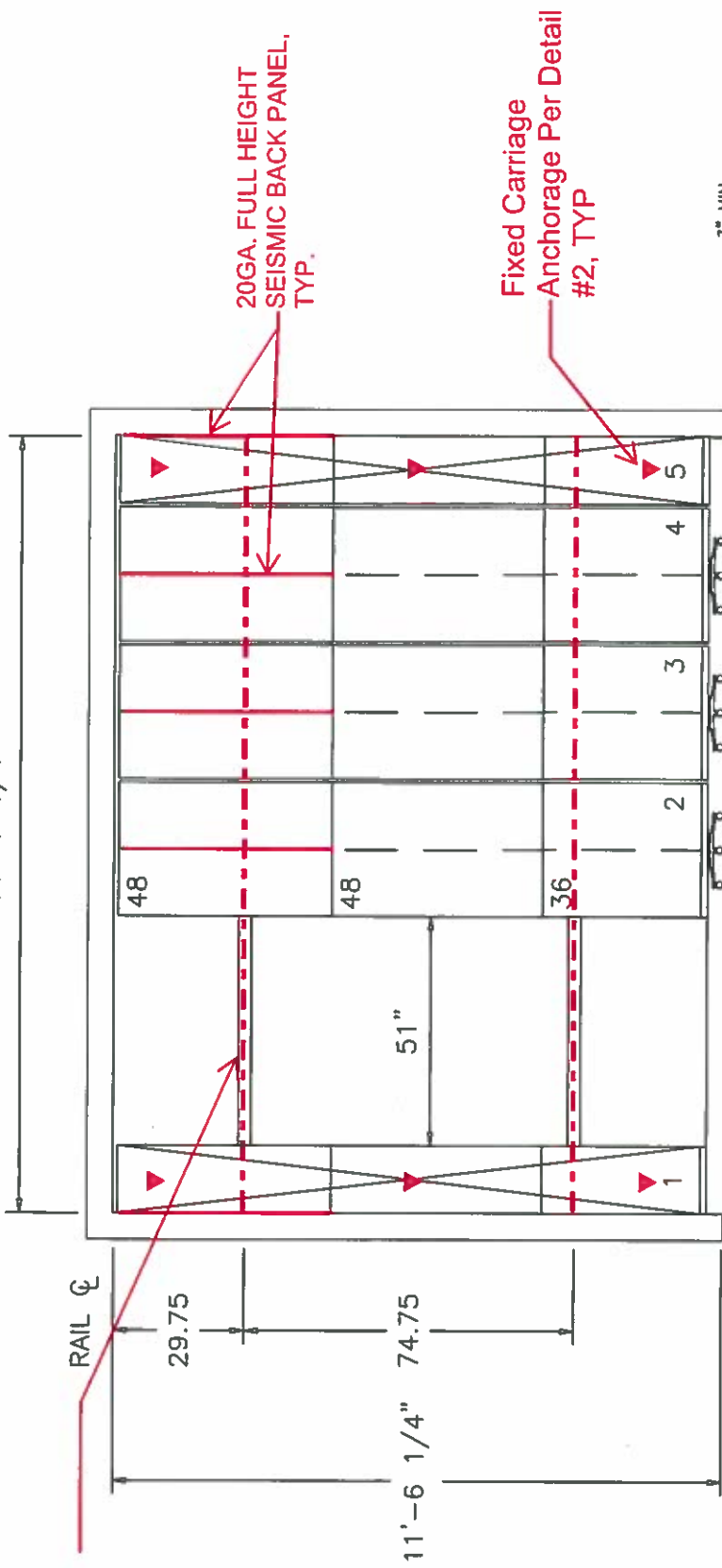
Information/ Comments: _____

ASSUMPTIONS:

1. $I_p = 1.0$
2. Slab is 6" min thick, 3,000 PSI.
3. $S_{DS} = 1.015$

Anti-Tip Track
Per Detail #1,
TYP

14'-7 1/4"



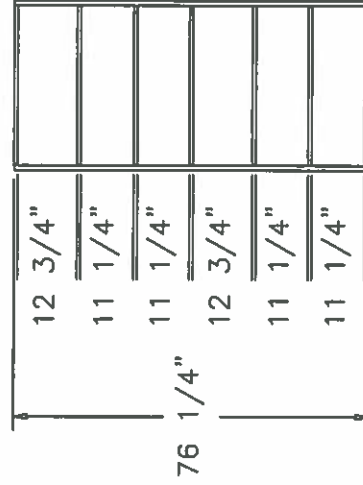
20GA. FULL HEIGHT
SEISMIC BACK PANEL,
TYP.

Fixed Carriage
Anchorage Per Detail
#2, TYP

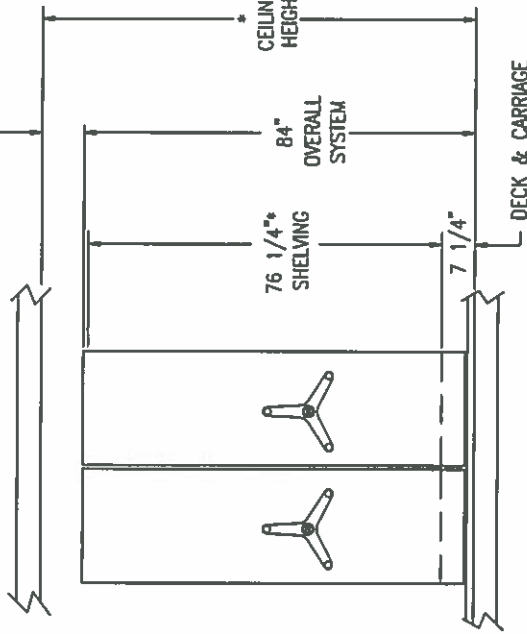
NOTES:

- ALL STARRED (*) DIMENSIONS MUST BE VERIFIED. ANY CHANGES MAY BE CAUSE FOR SYSTEM TO BE REDRAWN AND/OR REPRICED.
- SYSTEM:
TYPE: MECHANICAL (3:1)
CARRIAGE: HIGH PROFILE (1000#)
TRACK: UNIVERSAL
DECK: TAB-TRAC
END PANELS: STEEL
- SHELVING: DATUM @
15"D x 36" & 48"W x 76-1/4"H *
30"D x 36" & 48"W x 76-1/4"H *
- CARRIAGE SIZES:
(2) FIXED @ 11'-0 1/4" Lg x 15 1/4" (#1,5)
(3) MOVABLE @ 11'-0 1/4" Lg x 30 1/4" (#2-4)
- MINIMUM CLEARANCE REQ'D ABOVE A MECHANICAL SYSTEM: 3"

6 HIGH

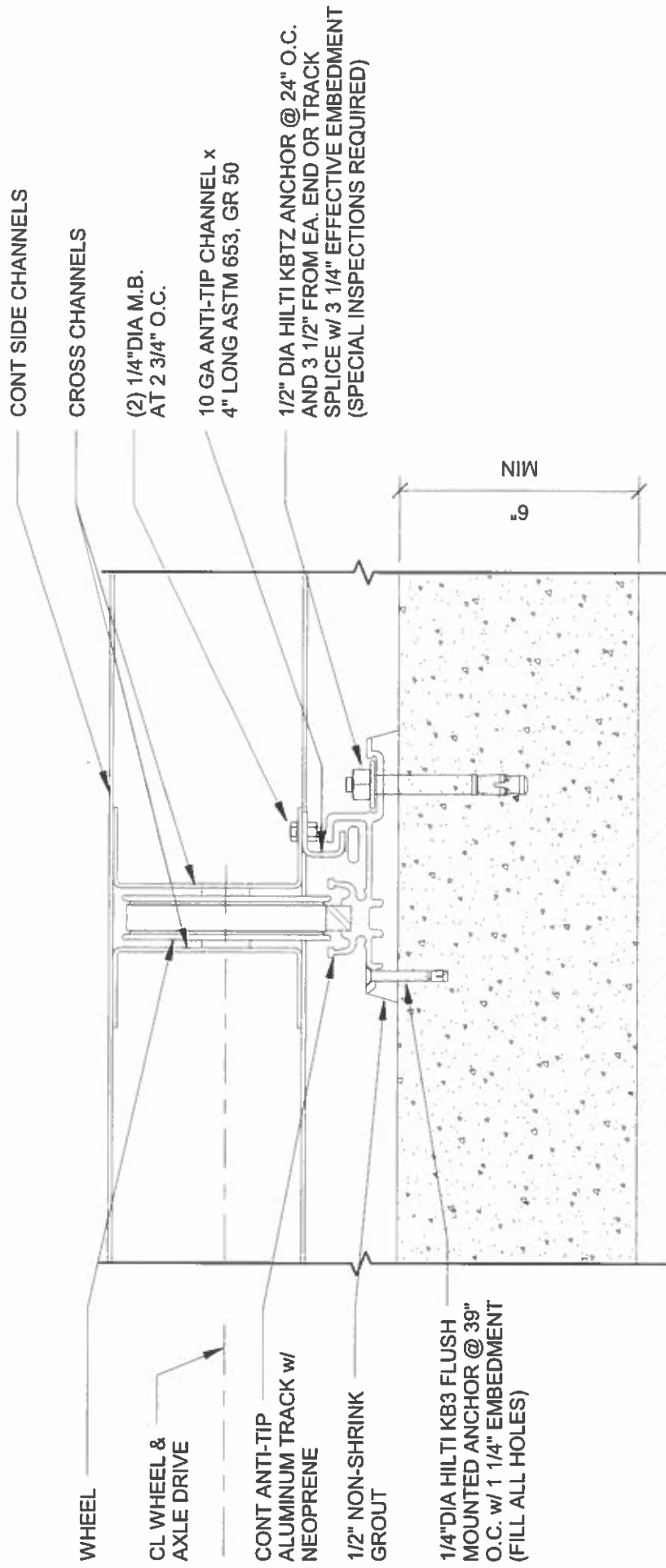


3" MIN
CLEARANCE

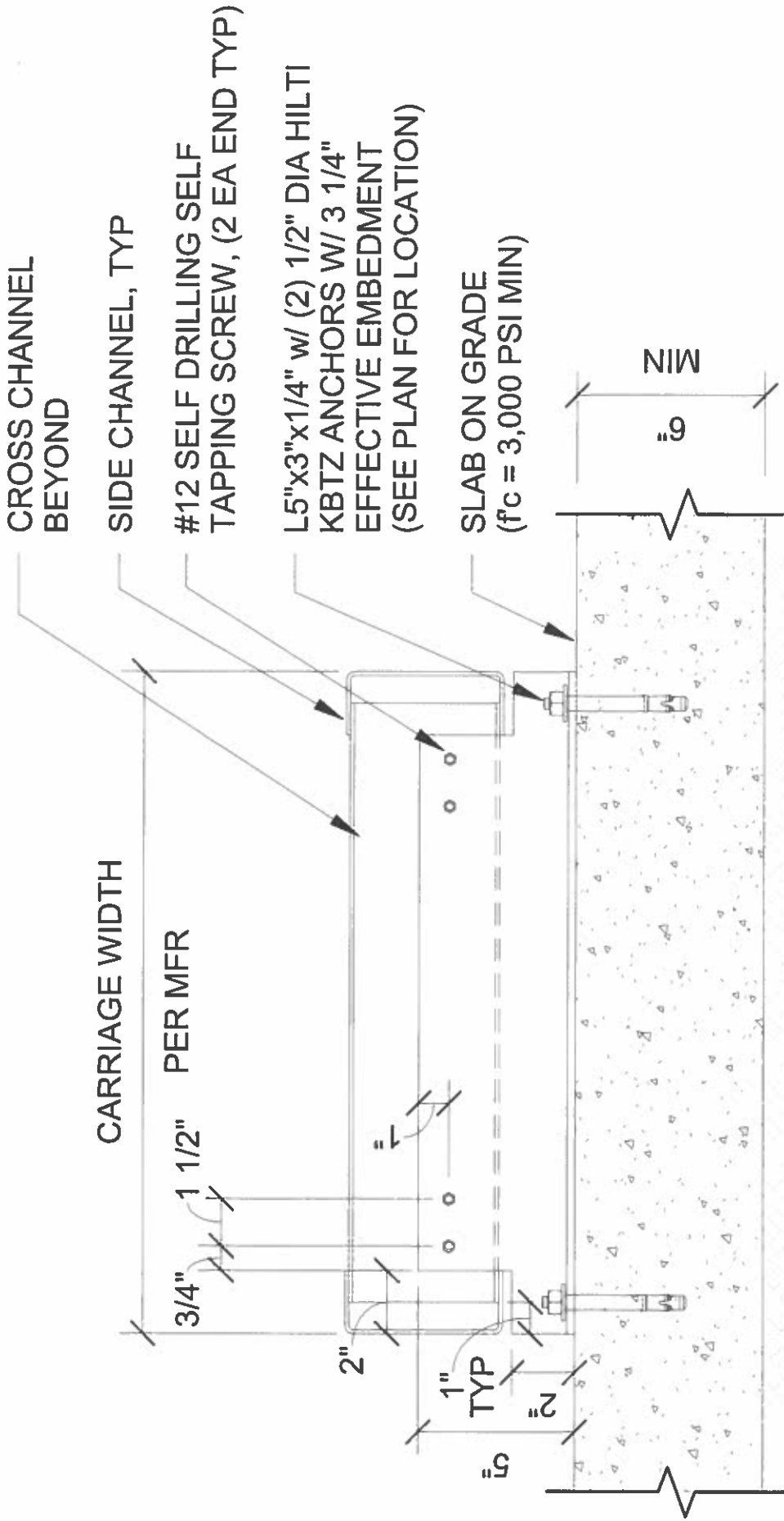


TITLE	CITY OF LA PALMA	DWG NO	NB3033
OFFICE	TAB PRODUCTS	SCALE	NONE
REP	KEN LIEBOWITZ	DATE	04/10/2017
		REVISED	

ALL DESIGNS REPRESENTED BY
DRAWING ARE CONFIDENTIAL AND
SHOULD NOT BE DISCLOSED
WITHOUT WRITTEN PERMISSION
FROM TAB.



Detail 1



Detail 2

TAB PAINT COLOR CHART



Black
(T25)
TAB Black



Light Gray
(T47)
TAB Neutral Gray



Gray Mist
(T86)
TAB Cool Gray



Medium Gray Metallic
(T23)
TAB Charcoal



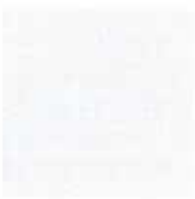
Tan Metallic
(T56)



Warm Brown
(T22)



Bone White
(T15)
TAB Ivory Beige



Ivory
(T48)



London Fog
(T53)
TAB London Fog



Dark Gray Metallic
(T45)



Light Gray Metallic
(T34)



Sand
(T18)
TAB Sand



Soft White
(T46)



Pure White
(T94)
TAB White



Burgundy
(T17)



Tech Blue
(T42)



Slate Blue
(T41)



Sage
(T29)



Industrial Red
(T27)



Blue
(T58)



Safety Yellow
(T93)

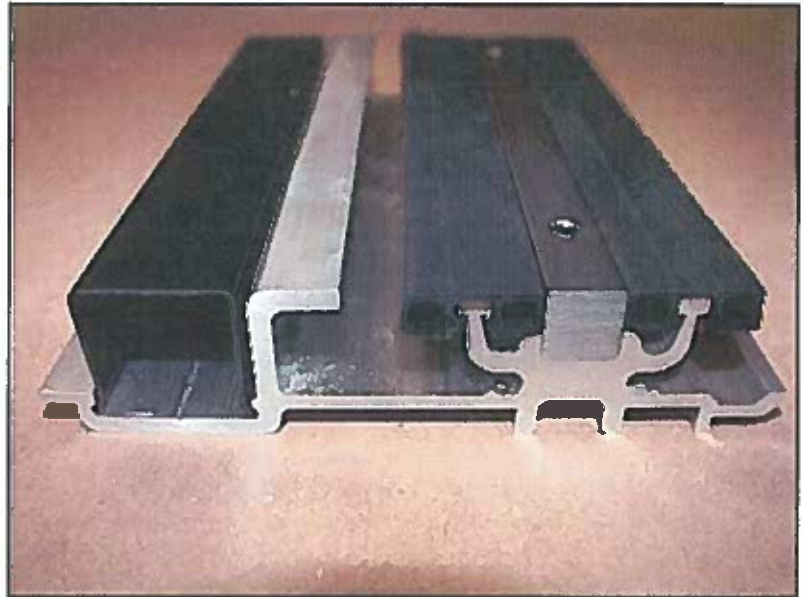
Samples shown are printed reproductions and may differ slightly in color from the actual product.



CONTACT ONE OF OUR
REPRESENTATIVES TODAY.

UNITED STATES • 888.822.9777 www.tab.com
CANADA • 800.387.6212 www.tab.ca
EUROPE • +31 20 6975333 www.tab.nl

UNIVERSAL SEISMIC ANTI-TIP TRACK



Meet CBC 2013 Seismic Requirements

In response to the CBC 2013 seismic requirements, TAB has developed a new seismic anti-tip track that is now available to meet these standards. The new track design is approved by IDS Group (CA Structural & Earthquake Engineers) to meet seismic anchoring requirements for Mobile Filing Systems. Use TAB's Universal Seismic Anti-Tip Track with any TAB Mobile System.

Specifications

- 6" wide aluminum track housing
- 5/8" steel rail
- Tongue and groove alignment and recess channel
- Anchor capability
- Leveling screw adjustability
- Continuous non-shrink grout
- Seismic engineered to meet California Building codes
- Removable 18 gauge painted steel anchor caps

Benefits

Widest base in industry for better floor distribution

Non-corrosive - will not rust like steel rail systems

Transfers load properly to sub floor

Maintains best rail alignment in the industry

Provides smooth and easy carriage movement

Double overlap superior to standard tongue and groove connections



CONTACT ONE OF OUR
REPRESENTATIVES TODAY.

UNITED STATES • 888.822.9777 www.tab.com
CANADA • 800.387.6212 www.tab.ca
AUSTRALIA • 800.50.3453 www.datafile.com.au
EUROPE • +31 20 6975333 www.tab.nl