

**CONTRACTOR QUESTIONS CLARIFICATION
FOR
ORANGETHORPE AVENUE REHABILITATION PROJECT
(CITY PROJECT NO. ST-353)**

Contractors Questions Clarification Addendum No. 1, City Engineer Response in RED

1. Are the precast panels included in the Sidewalk repairs portion of work? **NO the pre-cast panels are the handrail repairs as noted.**
2. Does the City only require patching of the sidewalk and/or panels or R&R if necessary? **It is mostly patching with chipping of concrete to make grade and a surface for the patching material to adhere to. It is not full removal/replacement. No saw cutting to be allowed.**
3. What is the scope of Hand railing repair work? Painting only? **The handrail is the pre-cast concrete panels.**
4. Can you please provide a clearer copy of the Concrete Rehabilitation detail? **See attachment.**

Contractors Questions Clarification Addendum No. 2, City Engineer Response in RED

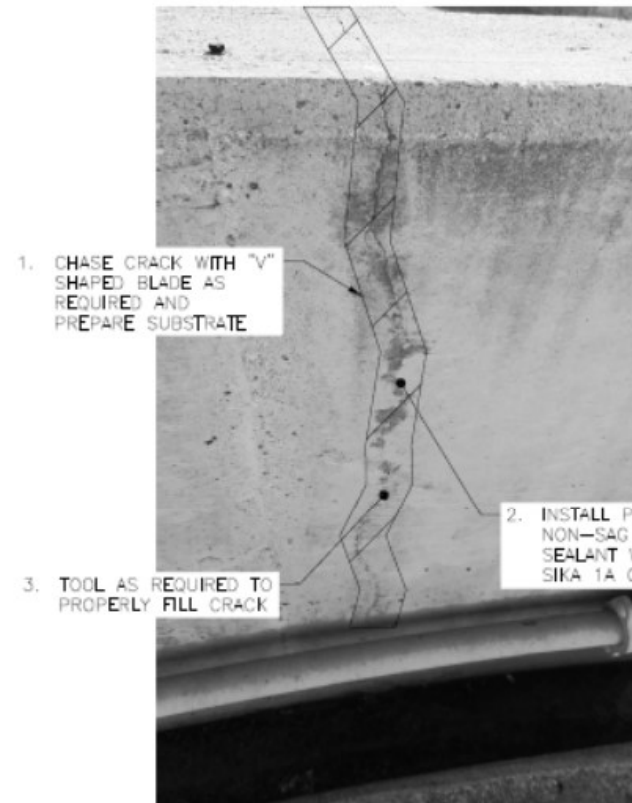
"I am looking for some clarification of Addendum # 2. I can't seem to find any information on the item for Handrail Repairs or Soffit Light Installation. I can't seem to find a plan, quantity or specification for these 2 items. Also the basis for award is confusing as well".

1. **Handrail information are posted on the City's website with Addendum No. 1.**

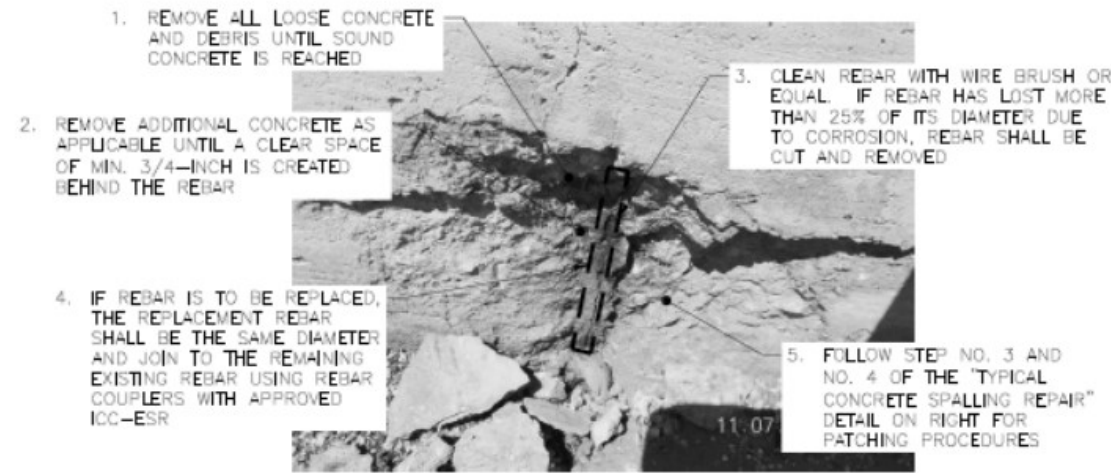
<https://www.cityoflapalma.org/194/Public-Works-Bid-Contract-Opportunities>

2. **Soffit lights, The City does not have any current plans. An electrician is to investigate, inspect and make operational the soffit lights mounted on the underside of the freeway bridges crossing Orangethorpe and Walker.**

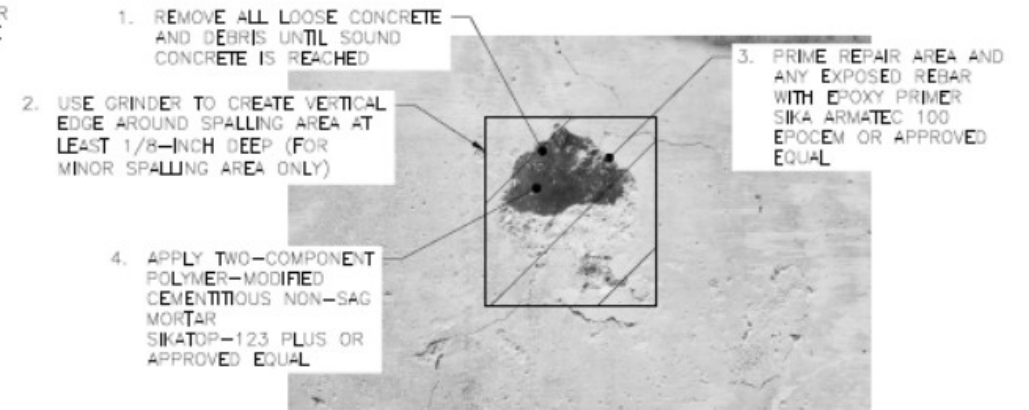
City of La Palma
ST-353 Orangethorpe Rehab
City Hall Concrete Repiars



**TYPICAL VERTICAL NON-STRUCTURAL
 CONCRETE CRACK REPAIR**



**TYPICAL EXPOSED
 REBAR REPAIR**



**TYPICAL CONCRETE
 SPALLING REPAIR**

CONCRETE REHABILITATION QUANTITIES

TYPE	ESTIMATED QUANTITIES (SEE NOTE NO. 2)
NON-STRUCTURAL VERTICAL CONCRETE CRACK	350 SQ FT
EXPOSED REBAR	5 EA
CONCRETE SPALLING	350 SQ FT

NOTE

1. THESE DETAILS ARE FOR GUIDANCES PURPOSE ONLY. CONTRACTOR SHALL ASSESS THE CONDITION OF EACH DEFECT AND DETERMINE THE APPROPRIATE REHABILITATION PROCEDURE. ALL PROCEDURES SHALL ADHERE TO THE REQUIREMENTS SPECIFIED IN SPECIFICATION SECTION 03 93 00 FOR CONCRETE REPAIR AND REHABILITATION.
2. QUANTITIES ARE PROVIDED FOR GUIDANCES PURPOSE ONLY. EXACT QUANTITIES ARE TO BE FIELD DETERMINED WITH IEUA ENGINEER.
3. FOR STRUCTURAL CRACK REPAIR, SEE SPECIFICATION SECTION 03 93 00.

CONCRETE REHABILITATION

NOT TO SCALE

